

# Introducing:

---



[www.permasealtire.com](http://www.permasealtire.com)  
**PermaSeal Tire Sealant**  
**(714)545-5888**

# What is PermaSeal?

---

- PermaSeal is an **Propylene Glycol** water soluble tire sealant
  - *Glycol base* makes it a very consistent sealant which will not freeze, separate or dry out under adverse conditions.
- When installed in a tire it will give full protection against air loss for the *entire legal life of a tire.*

# What Does PermaSeal Tire Do?

---

- PermaSeal has a revolutionary water and chemical formula that enables the product to *remain fluid at all times*, thus enabling the product to immediately seal a puncture wound made by a object of:
  - Up to 6mm (1/4") in diameter in car tire and puncture wound made by a puncturing object of up to 12mm (1/2") in a commercial vehicle tire in the main tread area of the tire, without loss of air pressure.
  - *It will eradicate the following:*
    - Tread punctures
    - Bead leaks
    - Rim Leaks
    - Porosity

# Ingredients and Characteristics of PermaSeal

---

- ***Aqueous:***
  - therefore water soluble
- ***Glycol-based:***
  - does not dry out and is unaffected by temperature
- ***Non-Toxic and Non-Carcinogenic:***
  - safe to the touch without harmful fumes
- ***Natural glues and resins:***
  - allows the product to coat and seal the inside of the tire
- ***Rust Inhibitors & Anti Corrosion agents:***
  - helps preserve wheels and prevent rim degradation
- ***Recycled rubber crumb:***
  - the ingredient that seals punctures
- ***Environmentally Friendly:***
  - there is nothing in the product that effects any EPA standards and complies with all Toxic Substance Authority requirement

# Installation

While tires remain on the vehicle

---

- **The valve stem is removed from the tire.**
- **The pre-calculated amount of the product is pumped into the tire.**
- **The valve stem is replaced and proper tire pressure is confirmed.**
- **The vehicle should be driven to spread the product about the tire.**

# Installation

While balancing and rotating tires

---

- **Once the tires have been balanced the valve stem is removed.**
- **The pre-calculated amount of the product is pumped inside the tire.**
- **When the valve stem is replaced, the tire pressure should be confirmed.**
- **The tire can be spun on the wheel balancer to spread the product around the tire before mounting the wheel on the vehicle.**

# Commercial Availability

---

- It will seal a puncture wound created by a puncturing object of up to **12mm (1/2")** in diameter in the tread area of a designated commercial tire and form a permanent repair for the full legal life of the tire.

# How does it work?

---

- When penetration occurs, the tire pressure forces PermaSeal into the wound area sealing instantaneously around the penetrating object.
- If the object self extracts then, as the tire rotates the tread area is deformed when in contact with the road surface, the puncture wound is forced open and the product is forced into the puncture wound by the air pressure within the tire.

# The Guarantee

---

- **Written warranty** - Should any tire suffer a puncture or tire deflation within the criteria:  
**PermaSeal** will repair or replace the tire **FREE** of charge.

*(The above, only applies if the product has been installed by a Registered PermaSeal Trained Installer)*

# Wheel Condition

---

- PermaSeal does NOT and will NOT cause or create a wheel imbalance (if all pre -installation checks and installation procedures are carried out correctly)
- See: *Pre installation check sheet.*

# Viscosity

---

- When the vehicle wheels are turning PermaSeal will liquefy and spreads itself around the inside of the tire.
- When the wheel stops turning PermaSeal thickens into a gel and sticks to the inside of the tire.
- PermaSeal will be a permanent continuous layer of sealant around the inside of the tire.

# The Test

---

- **R.A.P.R.A.** (Rubber and Plastics Research Association)
  - An independent testing facility conducted the test....
  - 2 Puncture wounds were created in the crown of the tire at 6mm (1/4") diameter
  - The tire was run at 100mph continuously for 25,000 miles!

# Conclusion

---

- The tire completed the test and retained its inflation pressure during the test schedule.
- The tire retained its pressure just as if the puncture had not occurred!

# Additional Results

---

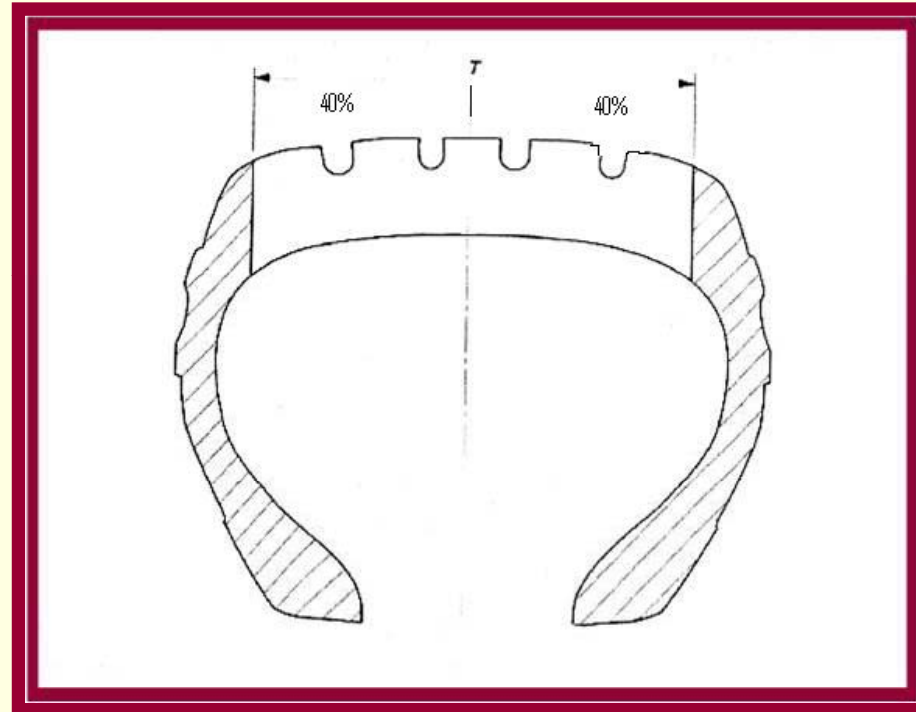
- Not only did the tire maintain a constant pressure, it's temperature was *2 degrees cooler* at the end of the test!
- This means that tread wear is slowed tremendously in any tire application.

# Other Lab Test Results

---

- Temperature Ratings:
  - Tested to -45 degrees without Freezing
  - Tested to temperatures up to 155 degrees
- In Both Cases the Product Remained Consistent.

# Radial Tires

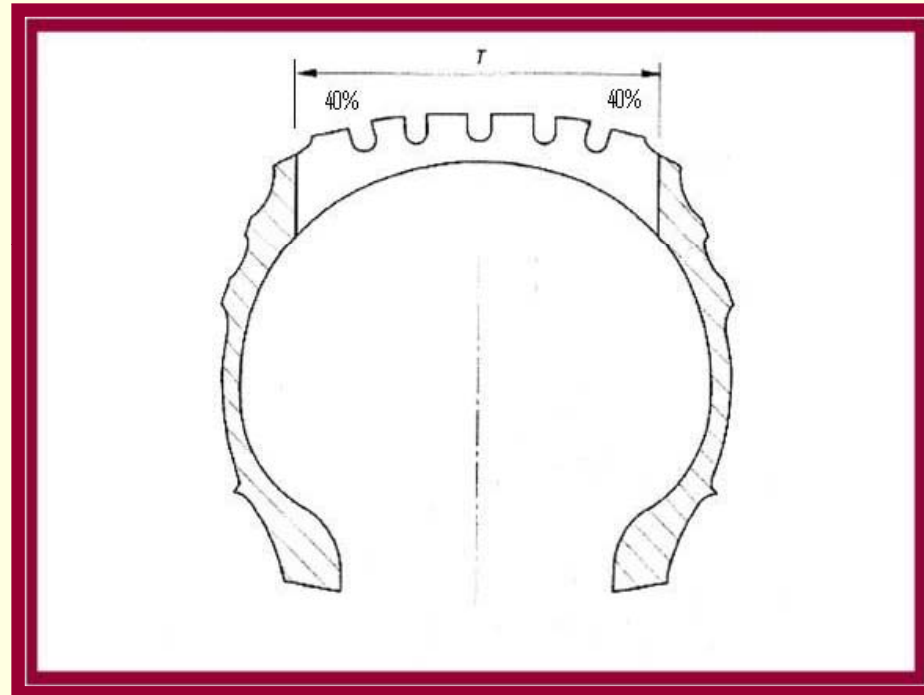


## Car and Commercial.

There shall be ***no limit*** to the number of minor repairs in the **area T** ***provided the repairs do not overlap***

Courtesy HDTM

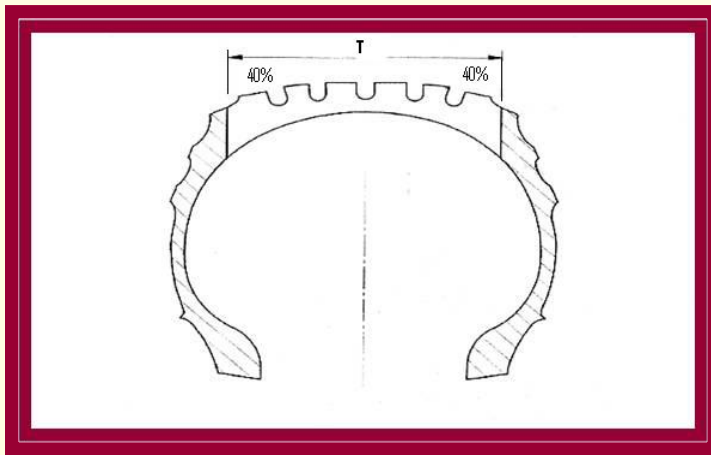
# Cross/Diagonal Ply Tires



*Car and Commercial*

# Recapped Tires

---



- The average tire casing can handle 2 - 3 recaps
- PermaSeal preserves tire casings
- Tire casings using PermaSeal can produce 5 - 6 recaps

# Tire Maintenance

---

- How often do you (or your customers) check tire pressure?
- How much does it really cost to have under-inflated tires?

# UNDERINFLATION

---

- Under-inflated tires increase rolling resistance and returns poor fuel economy
- Under-inflated tires also heat up more quickly and run at a considerably higher temperature than normal – this causes premature tread-wear
- What's the cost of tire replacement?

# UNDERINFLATION

---

<u>% Under- Inflation</u>	<u>% Reduced Tire Life</u>	<u>%Lower Fuel Economy</u>
10%	5%	2.5%
15%	20%	5.0%
20%	28%	7.5%
30%	37%	10%

**Under inflation is not only hitting your pocket book by increased tire wear and tire purchases, it is also effecting your expenses on lower fuel economy and increased tire maintenance costs.**

# Tires are Expensive!

---

- According to Heavy Duty Trucking Magazine:
- 65% of roadside calls are tire related
- 49% of roadside costs are due to flats

# Down-Time Costs

---

## **PermaSeal will save you money!**

- Cost of roadside service
- Wages paid to drivers for waiting
- Missed and delayed deliveries
- Replacement vehicle and drivers
- Cost of tire repairs and replacements

# Return on Investment

---

- **15% to 25% Extended Tire Life!**
- **5% to 10% Improved Fuel Economy!**
- **No More Costly Tire Repairs!**
- **No More Down-time due to Flats!**

# DEALER PROFIT CENTERS

---

- **Service Drive** - an easy up-sell for service writers to increase their average repair orders
- **Parts Counter** - set up displays and brochures and allow counter men to write tickets
- **New and Used Car Department** - salespeople can increase front-end gross by selling low-cost accessories
- **Finance and Insurance Department** – PermaSeal comes with warranty at no additional cost

# Conclusion

---

- **PermaSeal is not expensive**
- **PermaSeal has the best guarantee on the market**
- **PermaSeal is a great profit center for your dealership in sales and service**
- **PermaSeal can help you increase front-end and finance gross**